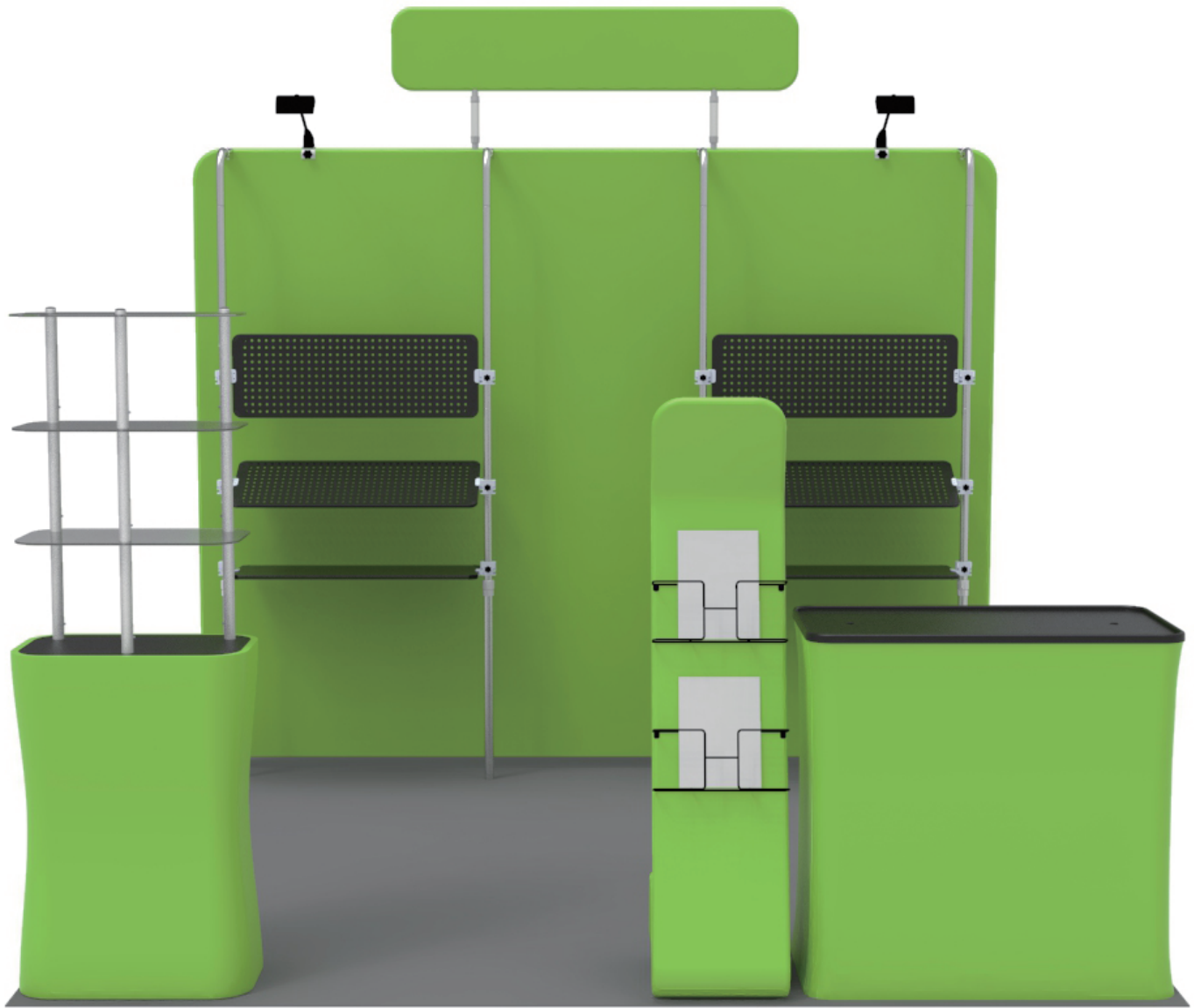


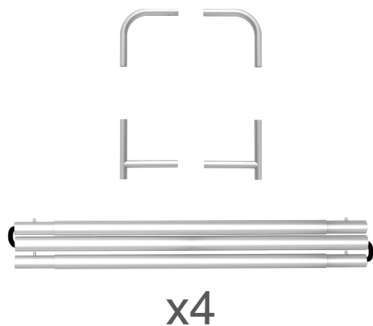
INSTRUCTION



10X10FT-BOOTH-E

STEPS

(1) Hardware

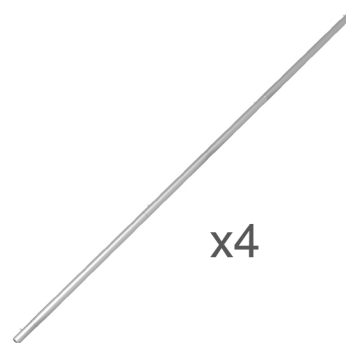
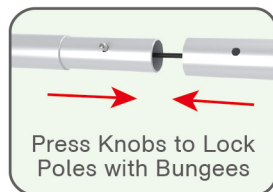


(2) Printed Graphic Fabric Banner (Optional)



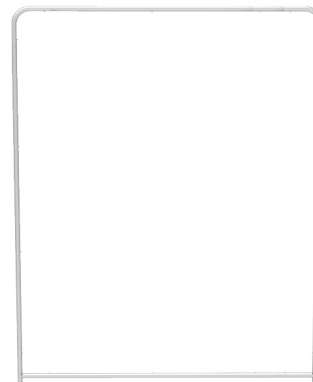
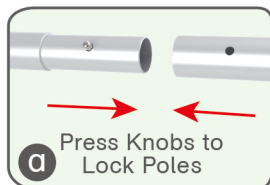
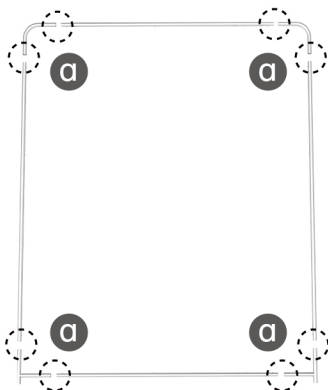
STEP 01

Connect to make long poles according to labelings.



STEP 02

Connect long poles with corner poles according to labelings.



STEP 03

Slide fabric banner on frame from top and zip up at bottom.



STEPS

(1) Hardware

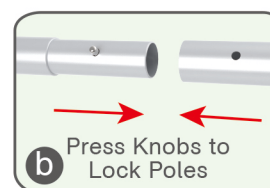
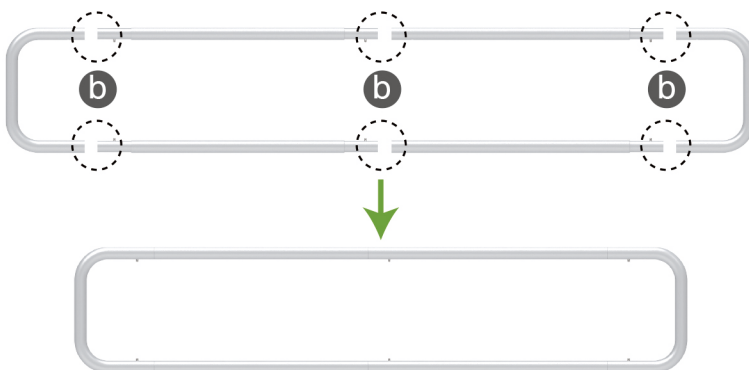


(2) Printed Graphic Fabric Banner (Optional)



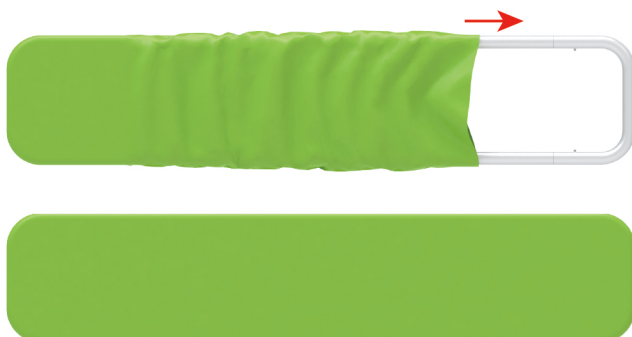
STEP 01

Connect poles according to labelings.



STEP 02

Slide fabric banner on frame from left and zip up at right.



Booth Set Assembly



(1) Base

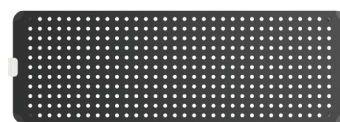


x2

(2) Shelving Board



x12



x6

(3) Support Pole



x2



x4



x2

(4) LED Light & Clip



x2



x2



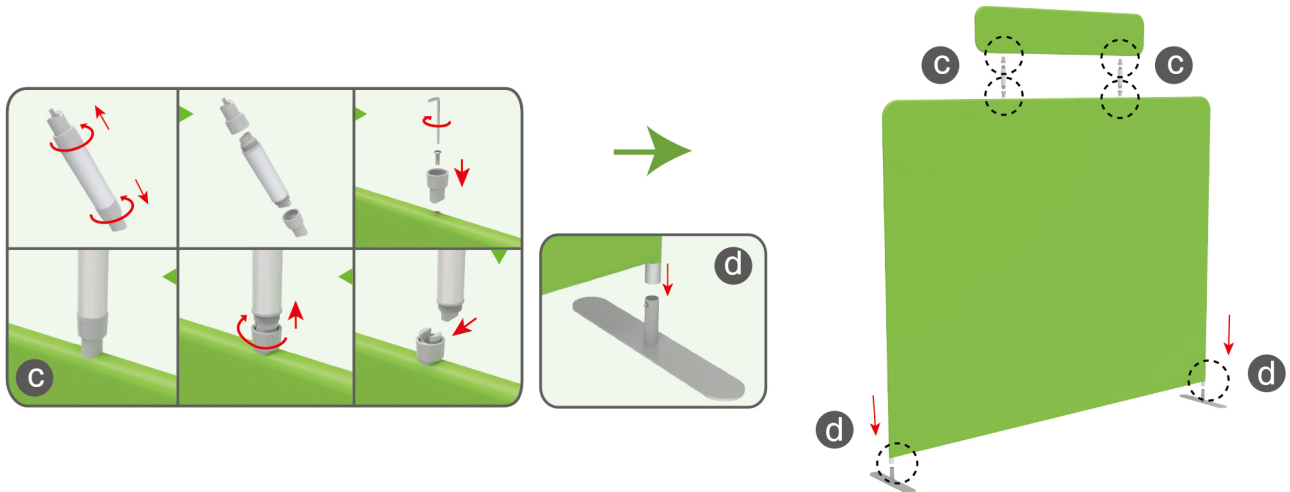
x4



STEPS

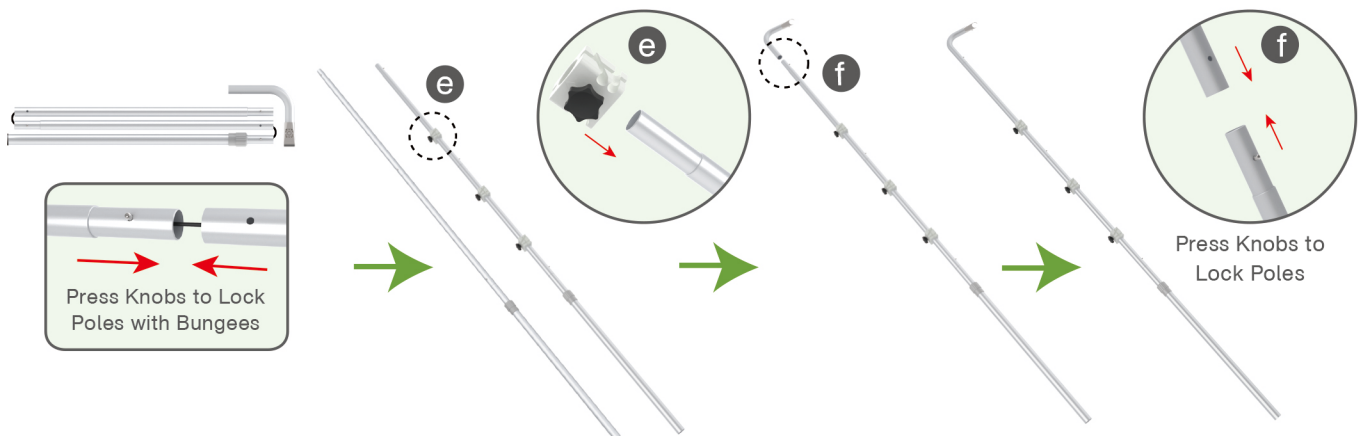
STEP 01

Insert display stands onto feet by pressing their knobs, connect canopy and display stand with support poles.



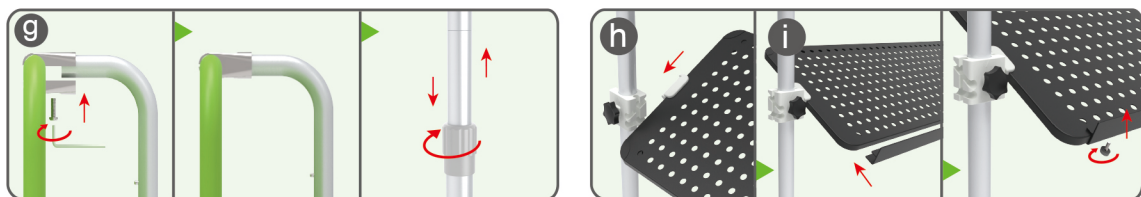
STEP 02

Connect to make long poles according to labelings, slide three-way clips onto long poles, insert short curved poles onto their top by pressing their knobs.



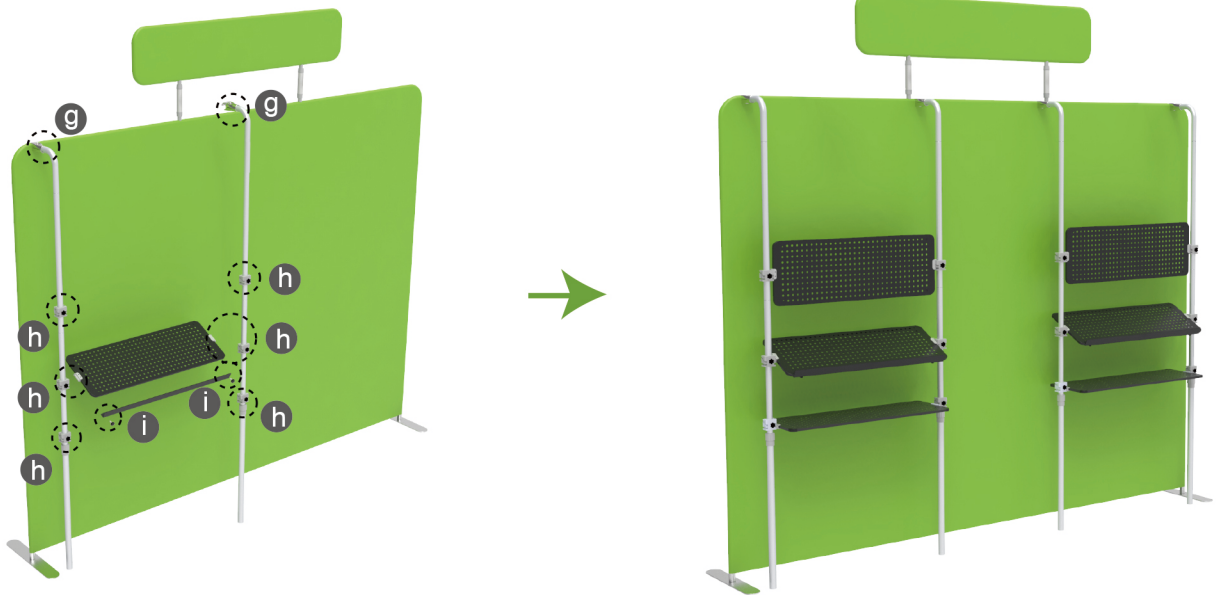
STEP 03

Connect long poles and display stand with clamps, adjust their height properly as needed by loosening and tightening screws.



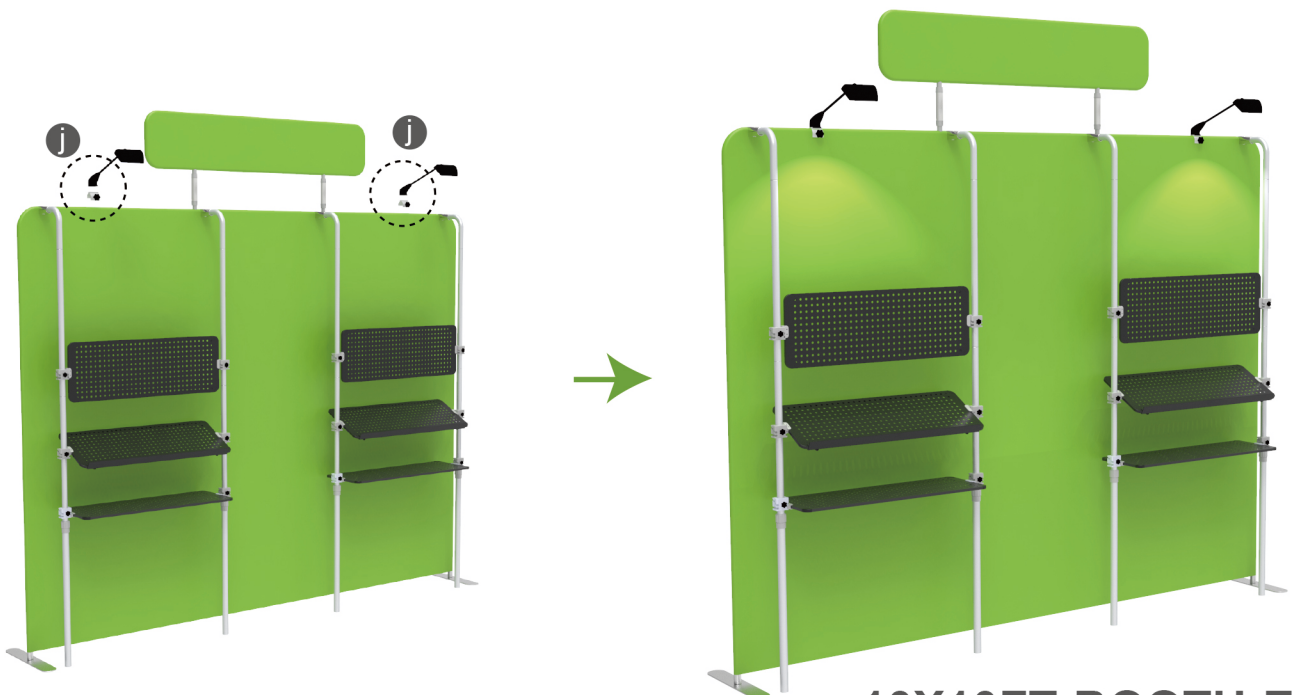
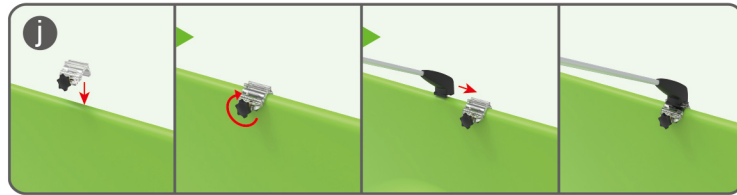
Clip into hanging boards based on directions of three-way clips & tightening with thumb screws, clip F-shaped bar onto hanging board with thumb screws.

STEPS



STEP 04

Screw light clips at top of display stands, slide lights onto them and adjust their direction.



10X10FT-BOOTH-E

STEPS

(1) Durable Plastic Hard Case, Aluminum Support Poles

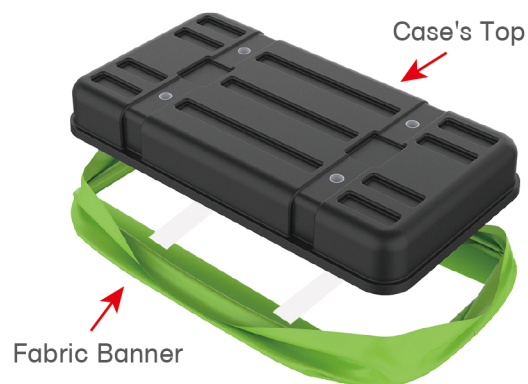


(2) Printed Graphic Fabric Banner



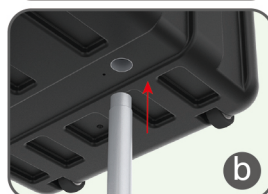
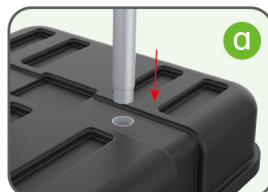
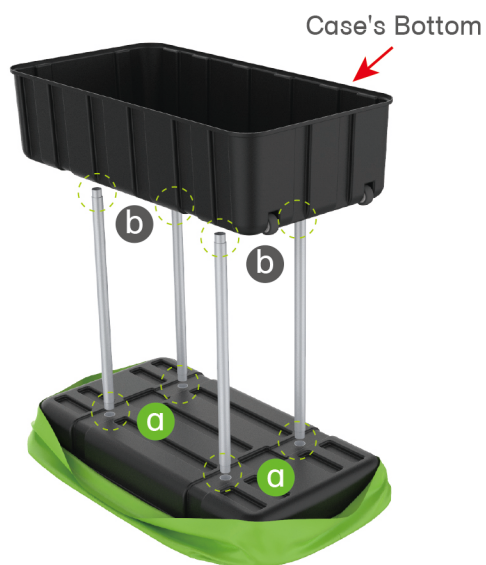
STEP 01

Put hard case's top into fabric banner.



STEP 02

Insert support poles into hard case's top & bottom.



STEPS

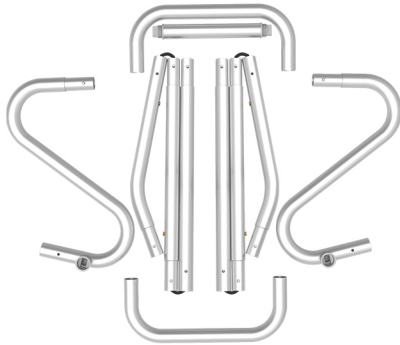
STEP 04

Wrap fabric banner from bottom to top & twist it to be smooth, lay hard case's intermediate panel on podium's top.



STEPS

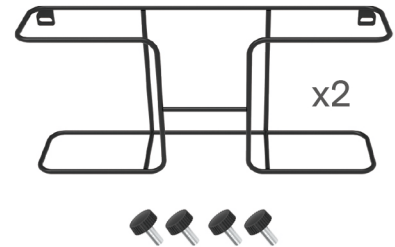
(1) Snap Tubes



(2) Printed fabric banner

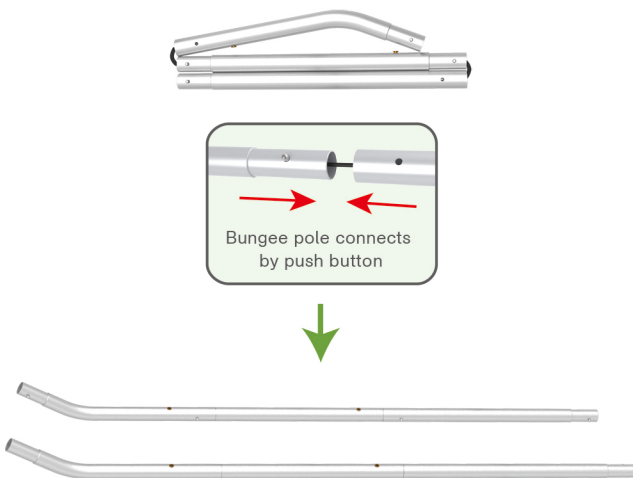


(3) Brochure rack x 2
Screws x 4



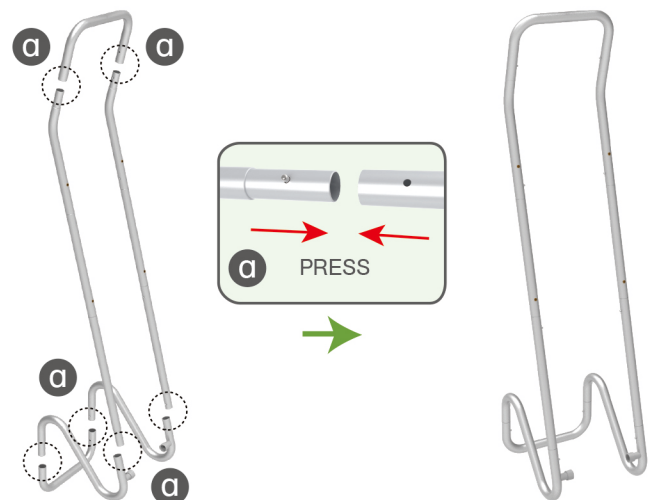
STEP 01

To Connect the tubes according to the labellings



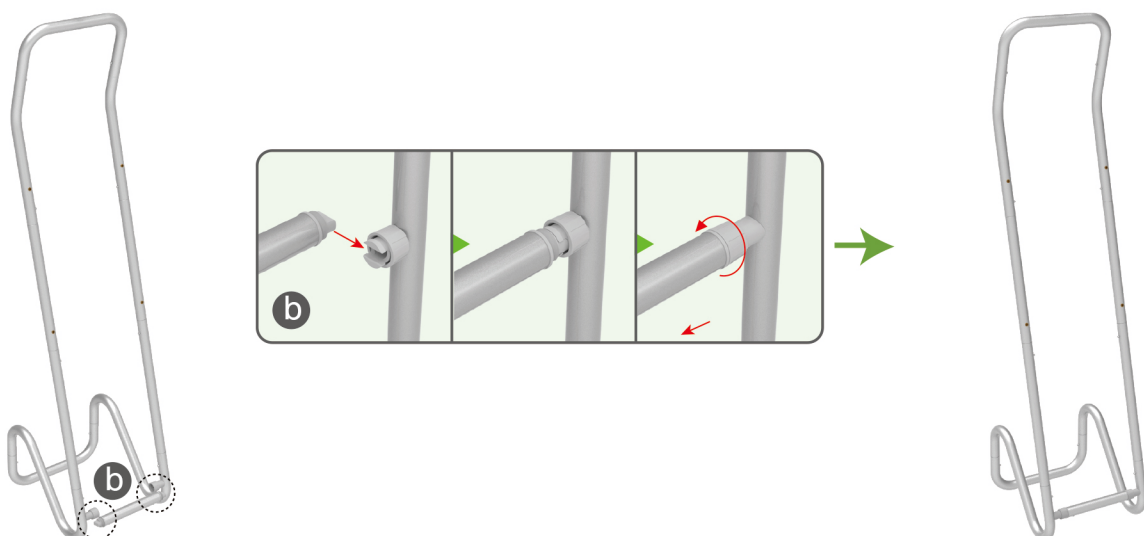
STEP 02

To connect 2 long side tubes by the corner pieces



STEP 03

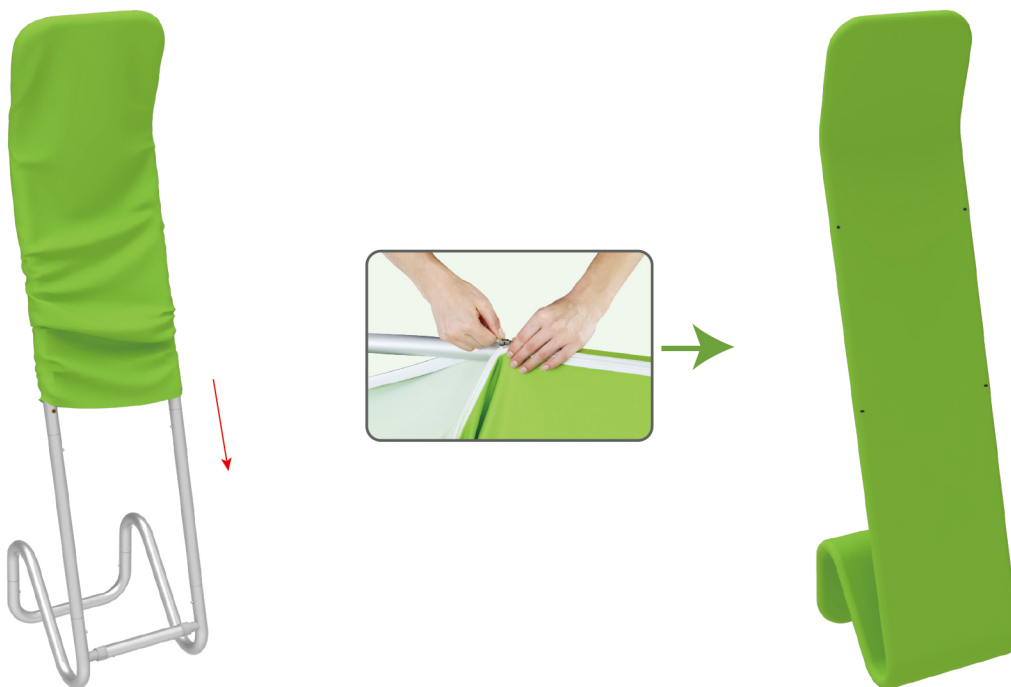
To install the cross bar according to labellings



STEPS

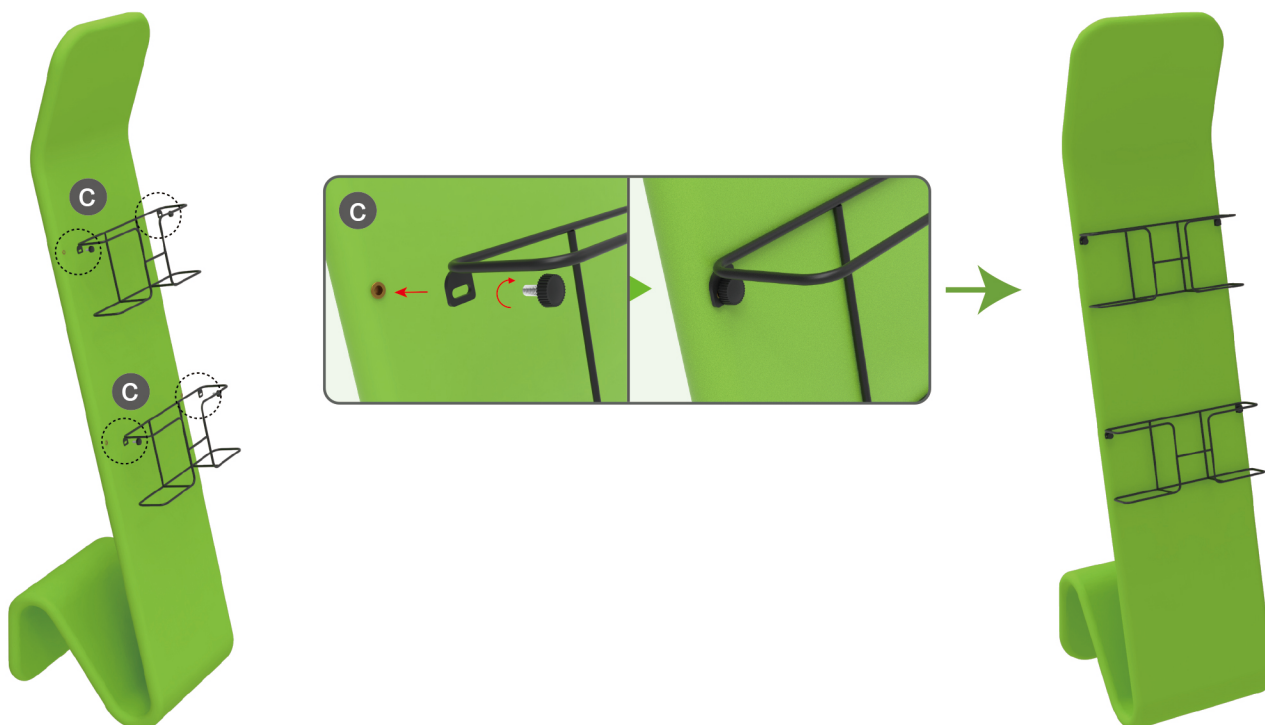
STEP 04

To Wrap up the fabric banner from top to bottom and zip up.



STEP 05

To install 2 racks by screws in position



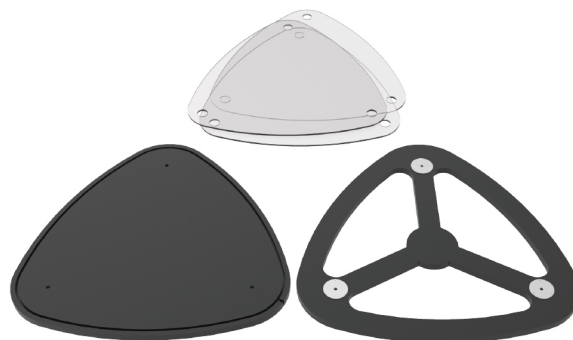
★ One Tool (Hex Wrench)

STEPS

(1) Straight Support Poles



(2) Top MDF Board, Bottom MDF Board, Acrylic Boards

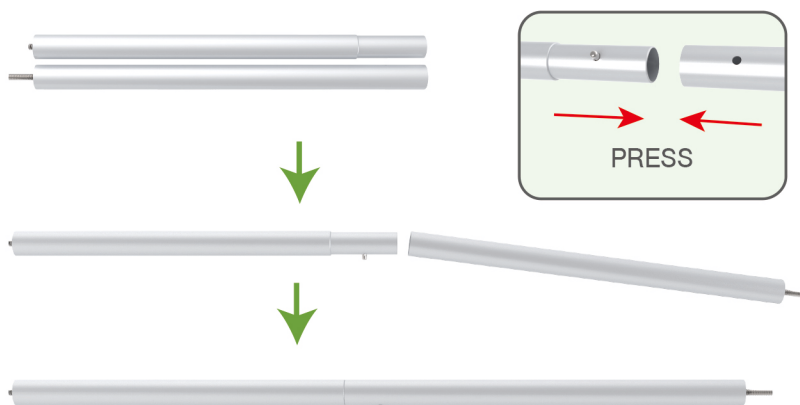


(3) Printed Graphic Fabric Banner



STEP 01

Connect straight support poles by pressing knobs to lock.

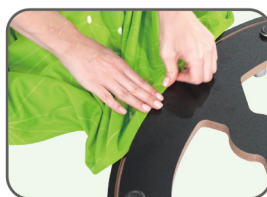


STEP 02

Insert fabric banner into bottom MDF board's slot and turn it over.



BOTTOM



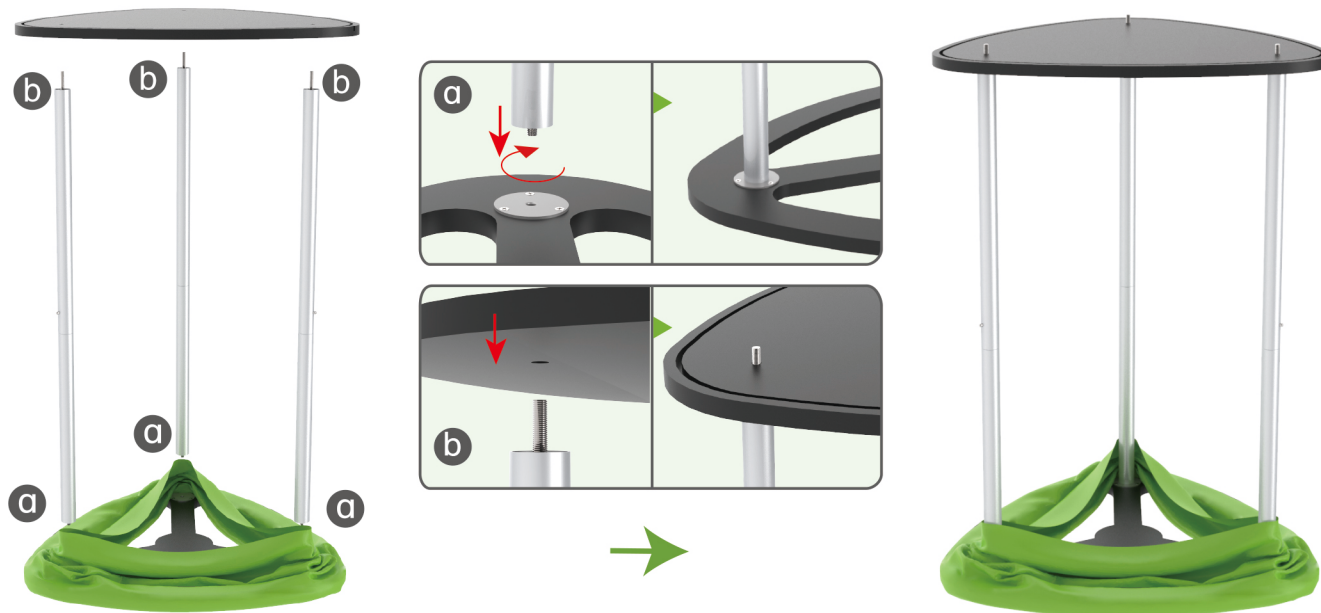
PRESS



STEPS

STEP 03

Screw straight support poles in bottom MDF board's threaded holes and place top MDF board on them.



STEP 04

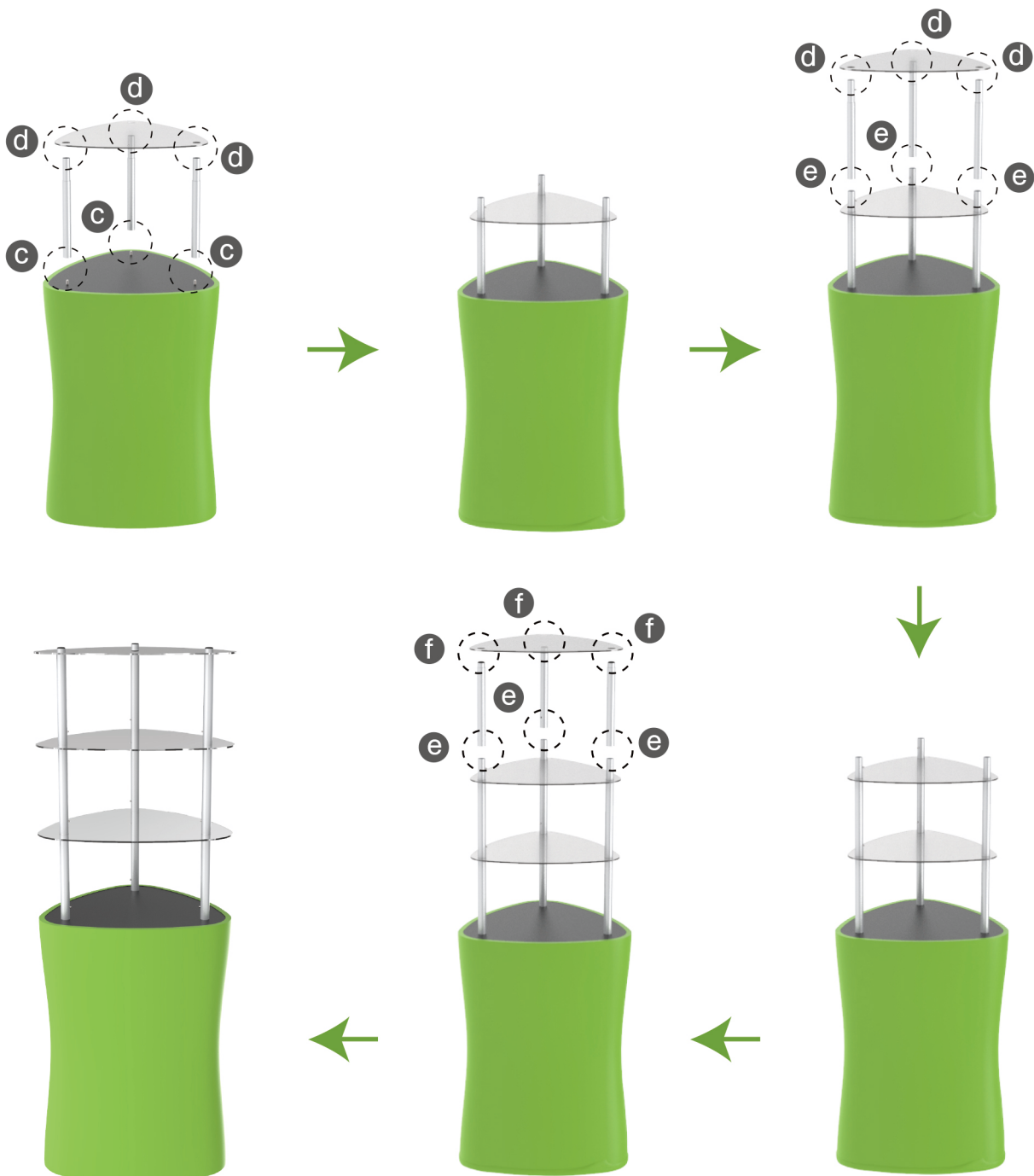
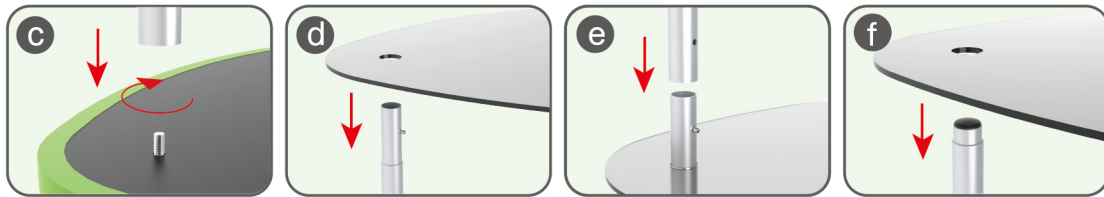
Pull fabric banner from bottom to top and insert into top MDF board's slot.



STEPS

STEP 05

Screw straight support poles with threaded holes filled onto nuts and place acrylic boards on them layer by layer.



STEPS



DT-S-02



DT-S-01



DT-S-03